

# Color Without Constraints

Factory-finished steel and panel systems tailored to your project.

## Your Structure. Your Color.

Allied gives you complete control over your building's appearance. The **primary steel structure can be factory-finished in virtually any color of your choice**, delivered directly from the factory. Secondary structural components, including roof and wall supports, may also be specified to align with your project needs.

Roof and wall panels are available in a broad range of colors and offered with either **Silicone Modified Polyester (SMP)** or **PVDF / KYNAR®** coatings. SMP provides strong durability and color performance for most projects, while PVDF / KYNAR® coatings offer enhanced fade resistance and long-term color stability for demanding environments.

### Solar Reflectivity (SR):

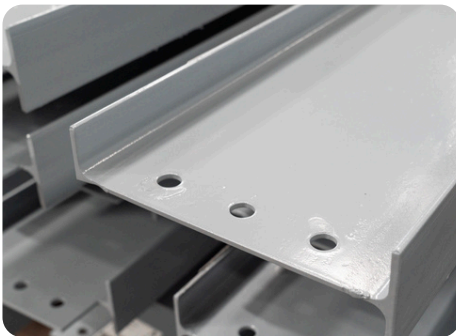
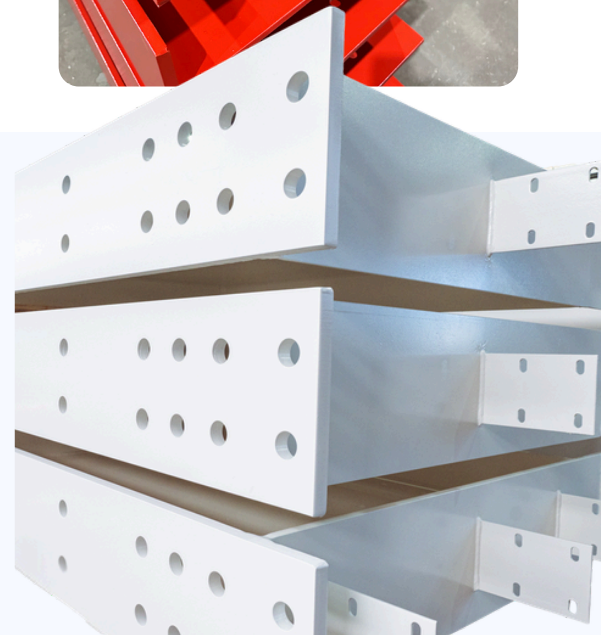
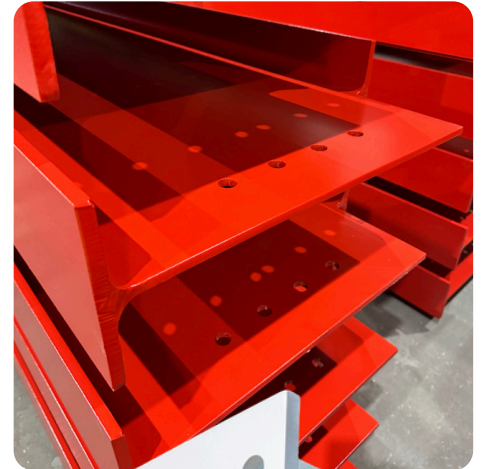
Solar reflectivity or reflectance is the measure of a material's ability to reflect solar energy or sunlight from its surface. SR values are numbered 0 to 1.0. A value of 0 indicates that the surface absorbs all solar energy and a value of 1.0 indicates total reflectance.

### Solar Reflectance Index (SRI):

The SRI is used to determine compliance with LEED requirements and is calculated according to ASTM E 1980 using values for reflectance and emissivity. To meet LEED requirements, a roofing material must have an SRI of 29 or greater for steep slope roofing and an SRI value of 78 or higher for low slope roofing. For more information, visit [usgbc.org](http://usgbc.org).

### Panel Paint Warranty Coverage:

20-40-year limited panel paint warranty available for all colors upon written request. *Please inquire.* (Outside the continental United States, *please inquire*).



April 2026

**Additional colors available upon request.**

Contact Allied today → 1.877.997.8335



## PRIMARY MATERIAL

(COLUMNS, RAFTERS, BEAMS)

### PRIMER OPTIONS

(STANDARD)

2 mils, 50 microns

Grey

### FINISH COAT (PREMIUM)

3 mils, 75 microns

zinc phosphate primer with polyurethane top coat)

 ALLIED Blue  
RAL5003

White  
RAL 9010

Grey  
RAL 7000

## SECONDARY MATERIAL

### PRIMER OPTIONS

Pre-galvanized

## PANEL/TRIM

### SILICONE MODIFIED POLYESTER

(SMP)

26-gauge panels/trims

Galvalume  
GM  
-

Solar White *TS324 ONLY*  
SW

Arctic White  
BW  
SR 0.69 SRI 84

Polar White  
PW  
SR 0.64 SRI 77

Ash Grey  
AG  
SR 0.46 SRI 52

Saddle Tan  
ST  
SR 0.47 SRI 53

Charcoal Grey  
CH  
SR 0.37 SRI 31

Burnished Slate  
BS  
SR 0.34 SRI 35

Hawaiian Blue  
HB  
SR 0.31 SRI 31

Crimson Red  
CR  
SR 0.31 SRI 31

Fern Green  
FG  
SR 0.29 SRI 29

Black  
CB  
SR 0.31 SRI 31

### FLUOROPON® 70% PVDF COATING SYSTEM (KYNAR)

24-gauge panels/trims

Regal White  
RW  
SR 0.85 SRI 83

Snow White  
KW  
SR 0.75 SRI 73

Almond  
KA  
SR 0.64 SRI 60

Brownstone  
KB  
SR 0.4 SRI 40

Slate Gray  
KS  
SR 0.15 SRI 15

Medium Bronze  
KM  
SR 0.3 SRI 27

Regal Blue  
KG  
SR 0.25 SRI 24

Regal Red  
KR  
SR 0.49 SRI 48

Evergreen  
KC  
SR 0.24 SRI 22

These color samples are as close as possible to the actual colors offered within the limitations of color-chip reproduction. Colors subject to market availability. Some colors only available in 24 gauge.



All colors are Energy Star® certified.

Additional colors available upon request.

Contact Allied today → 1.877.997.8335

